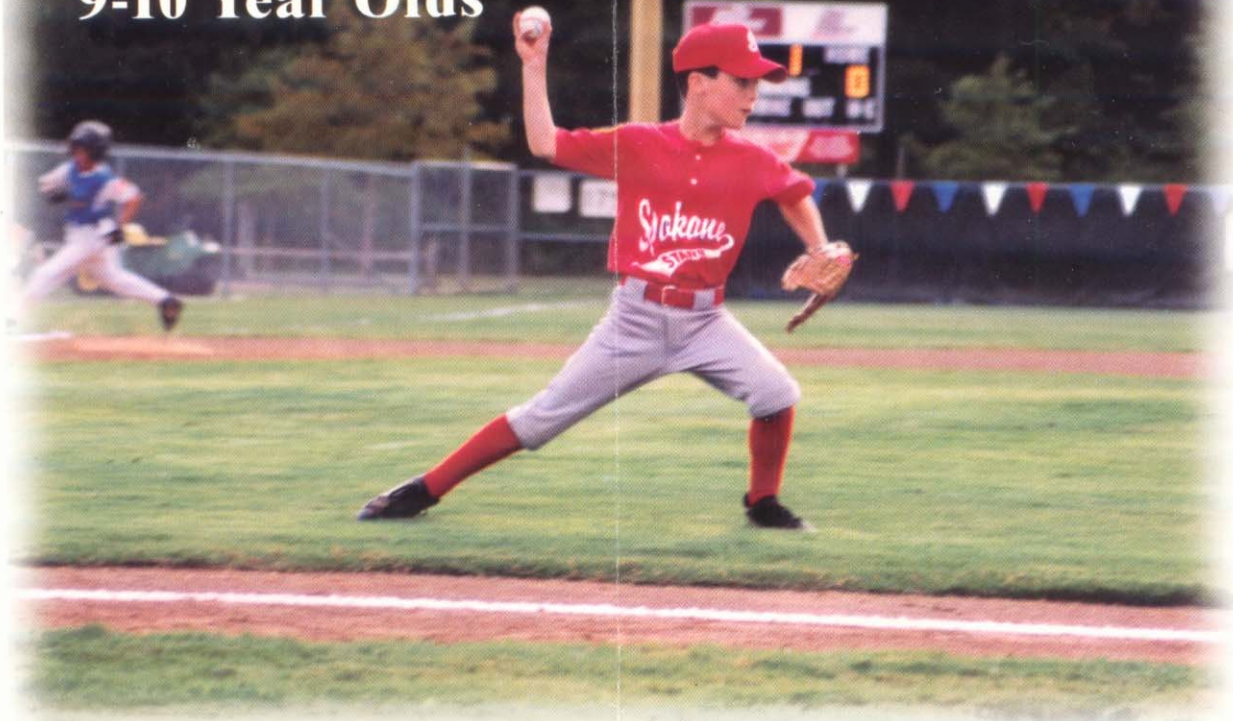


MUSTANG LEAGUE

9-10 Year Olds



SPECIFICATIONS

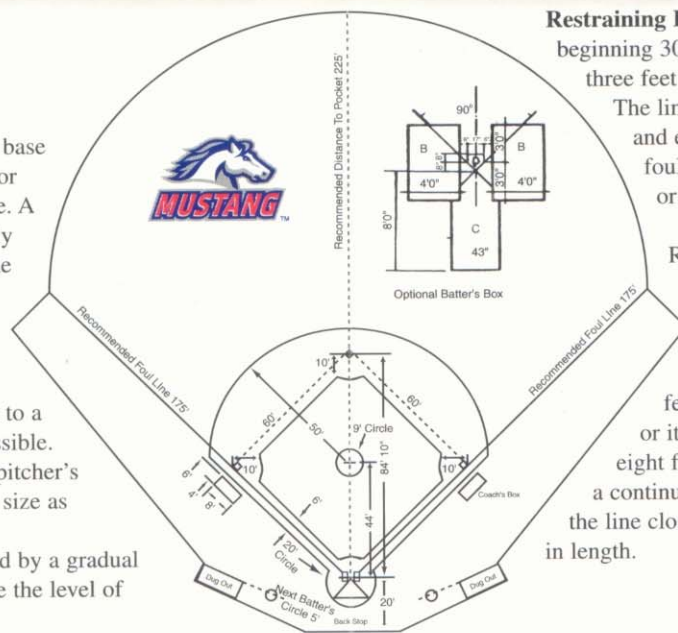
Bases - 60 feet

Pitching: - 44 feet

Fair Play Area - Within the first base and third base foul lines and a fence or marked line 175 feet from home plate. A ball hit beyond that distance on the fly will be a home run. A minimum home run distance of 175 feet or a maximum of 225 feet will be recognized, with the recommendation that the home run distance be 175 feet at the foul lines and 225 feet in center field to a six or eight foot barrier wherever possible.

Bases, Plates - The home plate, pitcher's rubber and the bases shall be official size as used in regulation baseball.

Pitching Mound - Shall be raised by a gradual slope to a height of four inches above the level of home plate and the base paths.



Restraining Line - Located along first base, beginning 30 feet from home base and extending three feet beyond the first and second base line. The line, paralleling the first base foul line and extending three feet (36 inches) into foul territory, shall be marked with chalk or other white material two inches wide.

Distance to Backstop

Recommended distance from home plate to the backstop is 20 feet.

Catcher's Box - By local option, the catcher's box may be rectangular in shape 43 inches wide and eight feet deep from the point of home plate or it may be triangular in shape extending eight feet from the rear of home plate, being a continuation of the foul lines, in which case the line closest to the backstop shall be 16 feet in length.